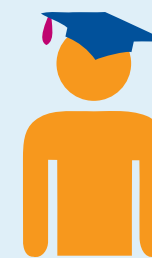


GENERAL PRACTICE NURSING



Starting salary for general practice nurses in the NHS is Agenda for Change band 5 **£24,214** outside London ^[1]



Entry requirements

To become a registered nurse, you'll need to study for a degree level qualification in nursing through either a full-time course or a nursing degree apprenticeship. You'll typically need a minimum of five GCSEs at grade 4-9/C or above plus two or three A-levels or equivalent qualifications at level 3. ^[2]



Training

General practice nurses are registered nurses, who need to be willing or have already undertaken further training ^[3]



94%

of nursing students get a job within six months of finishing their course ^[4]



What they say

"I love what I do and working with the wide range of people who walk through my door every day!" ^[5]

Nadia Halley,
(senior practice nurse)



Standard working week in the NHS is
37.5 hours



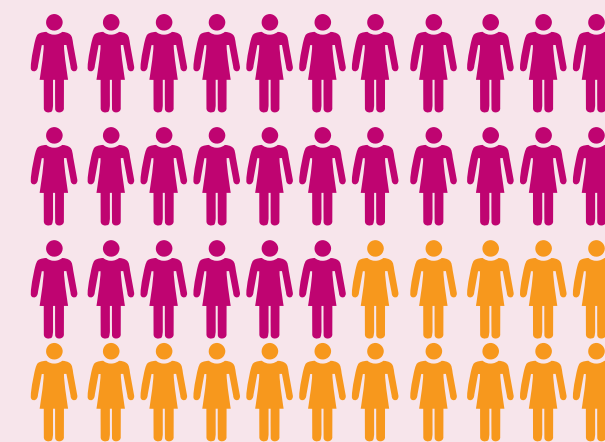
Skills and qualities needed

General practice nurses require resilience and the ability to be flexible and adaptable whilst working in surgeries, people's homes and other community settings ^[6]



236

Current general practice nursing vacancies in the NHS ^[7]



There are approximately **18,180** general practice nurses in the NHS ^[8]

Facts and figures taken from; [1] www.healthcareers.nhs.uk/AfC [2] www.healthcareers.nhs.uk/explore-roles/nursing/studying-nursing [3] www.healthcareers.nhs.uk/explore-roles/nursing/general-practice-nurse [4] www.healthcareers.nhs.uk/EXPLORE-ROLES/nursing/studying-nursing [5] www.healthcareers.nhs.uk/NadiaHalley [6] www.hee.nhs.uk/our-work/developing-our-workforce/nursing/transforming-nursing-community-primary-care [7] www.jobs.nhs.uk/ (30/05/19) [8] <https://files.digital.nhs.uk/C9/D50CA6/GPW%20Detailed%20Tables%20March%202019%20-%20HEE.xlsx>