

# GERIATRIC MEDICINE



Geriatric medicine is one of the largest branches of general medicine in the UK <sup>[6]</sup>

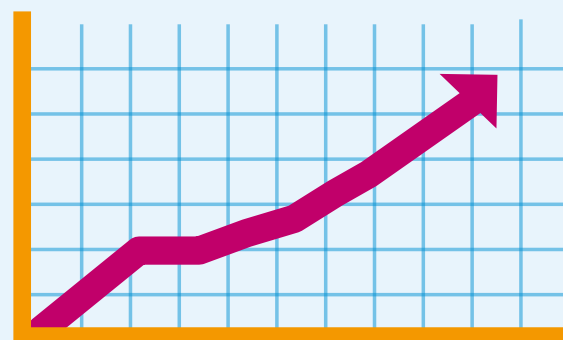


## Skills and qualities needed

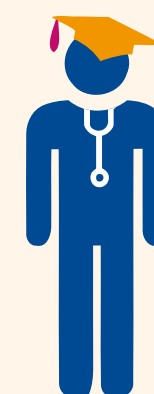
You need empathy and the ability to communicate with older people. You also need the ability to advocate against ageism and the stereotyping of old people <sup>[2]</sup>



**3,828** doctors were working in geriatric medicine in March 2017 <sup>[3]</sup>



Health Education England is commissioned **610** training places for geriatric medicine higher specialty training in 2016/17 <sup>[4]</sup>



## Entry requirements

For 5-year medical school courses, you will need very high A-level grades including sciences. There are other routes in if you have non-science subjects or a degree, but for all you must demonstrate an interest in medicine. You'll also need to pass an interview and usually take an admissions test. <sup>[5]</sup>



Women make up **62%** of higher specialty trainees in England, Wales and Northern Ireland <sup>[6]</sup>

## 'What they say'

"This role is everything I could have hoped for. I enjoy the intellectual challenge it brings and how fascinating and rewarding it is." <sup>[1]</sup>

Adam Gordon  
(Consultant geriatrician)



## Where the role can lead

Managerial opportunities for geriatric medicine consultants include clinical lead, clinical director and medical director <sup>[6]</sup>



## Training

Following a minimum of five years at university and two years training afterwards, you will typically train for six years to become a geriatrician <sup>[2]</sup>



There are currently **50** vacancies in the NHS for geriatric medicine <sup>[8]</sup>

Facts and figures taken from: [1] [www.healthcareers.nhs.uk/AdamGordon](http://www.healthcareers.nhs.uk/AdamGordon) [2] [www.healthcareers.nhs.uk/explore-roles/medicine/geriatric-medicine/entry-requirements-skills-and-interests](http://www.healthcareers.nhs.uk/explore-roles/medicine/geriatric-medicine/entry-requirements-skills-and-interests) [3] <http://content.digital.nhs.uk/catalogue/PUB24214/nhs-work-stat-mar-2017-doc-spec-level.xlsx>

[4] <https://hee.nhs.uk/sites/default/files/documents/HEE%20commissioning%20and%20invest-ment%20plan.pdf> [5] [www.healthcareers.nhs.uk/i-am/considering-or-university/studying-medicine/applying-medical-school/medical-school-courses](http://www.healthcareers.nhs.uk/i-am/considering-or-university/studying-medicine/applying-medical-school/medical-school-courses) [6] [www.healthcareers.nhs.uk/explore-roles/medicine/geriatric-medicine](http://www.healthcareers.nhs.uk/explore-roles/medicine/geriatric-medicine) [8] [www.nhsjobs.nhs.uk](http://www.nhsjobs.nhs.uk) (02/08/17)