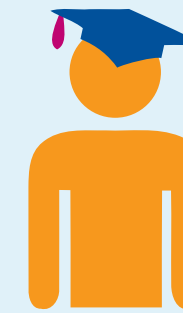


LEARNING DISABILITY NURSING



Starting salary for learning disability nurses in the NHS is Agenda for Change band 5 **£21,692** outside London ^[1]

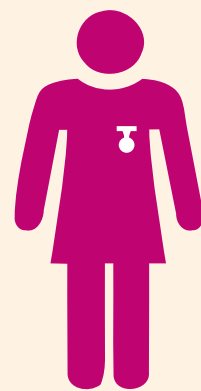


Entry requirements

Typically you will need a minimum of five GCSEs at grade C or above (usually in English and science) plus two A-levels or equivalent qualifications at level 3. Some universities may ask for three A-levels or equivalent ^[2]



3700 learning disability nurses work in the NHS. ^[9] That's about **35%** of the total number of registered learning disability nurses in the UK ^[6]



What they say

"The focus is not on 'making people better'. It's about enabling each person to reach their full potential, increase their independence and enjoy an improved quality of life." Sarah Trute, community behaviour specialist ^[8]



Current learning disability nursing vacancies in the NHS ^[4]

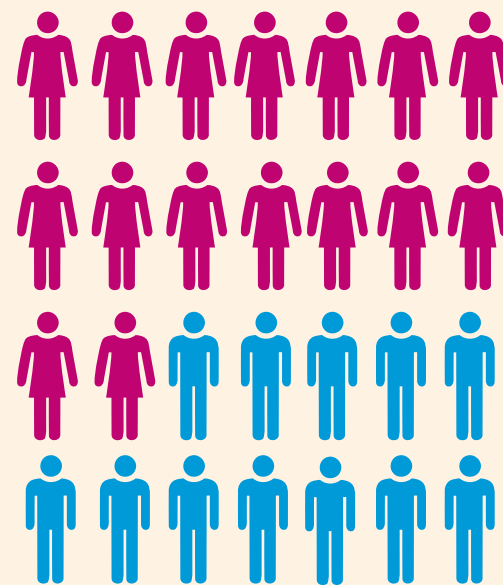


Length of training

Training usually takes **three years**. However, if you already have a degree in a relevant subject, you can often get recognition for this, enabling you to do the course in **two years** ^[2]



Standard working week in the NHS is **37.5 hours** ^[3]



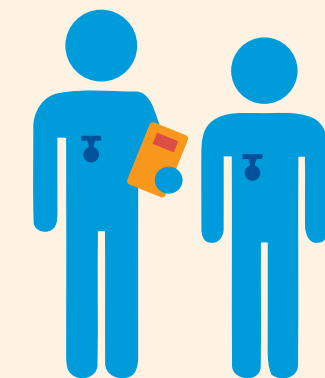
81.6% of learning disability nurses in community settings are female, whereas in other settings, it's **73%** ^[7]



28 universities across the UK run degree courses in learning disability nursing, with a total of 664 training places ^[3]



Two universities run dual-field courses where you can combine learning disability nursing with another field of nursing eg adult, child or mental health ^[5]



Skills and qualities needed

Patience, self-awareness and highly-developed, flexible communication skills are essential. You'll sometimes need to be assertive to ensure people with a learning disability do not suffer discrimination. Sensitive human interaction is also a core skill ^[3]

Facts and figures taken from; [1] www.healthcareers.nhs.uk/AfC [2] www.healthcareers.nhs.uk/explore-roles/nursing/learning-disability-nurse/entry-requirements-learning-disability-nursing [3] www.healthcareers.nhs.uk/explore-roles/nursing/learning-disability-nurse [4] www.jobs.nhs.uk/ (11/01/2016) [5] www.healthcareers.nhs.uk/i-am/looking-course [6] CfWI Publication - Learning disability nurses: Workforce risks and opportunities - education commissioning risks summary from 2012 [7] www.hscic.gov.uk/catalogue/PUB16933/nhs-staf-2014-non-med-detl-tab.xls [8] www.healthcareers.nhs.uk/explore-roles/nursing/learning-disability-nurse/real-life-story-sarah-trute [9] www.hscic.gov.uk/catalogue/PUB18981/nhs-work-stat-aug-2015-nur-area-levl.xls