

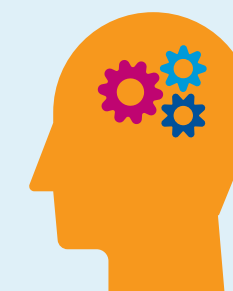
# MENTAL HEALTH NURSING



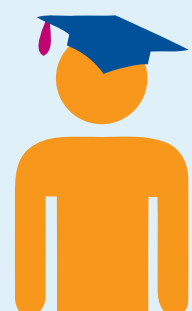
Starting salary for a newly qualified mental health nurse in the NHS is Agenda for Change band 5 **£24,214** outside London. <sup>[1]</sup>

# 36,290

Around 36,290 mental health nurses work for the NHS. <sup>[2]</sup>



There are **355** vacancies for mental health nurses. <sup>[3]</sup>



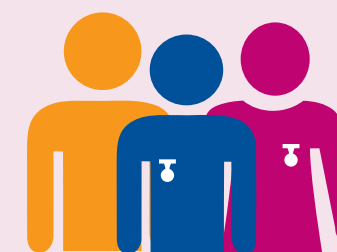
## Entry requirements

To become a mental health nurse, you'll need to study for a degree level qualification in nursing through either a full-time course or a nursing degree apprenticeship. You'll typically need a minimum of five GCSEs at grade 4-9/C or above plus two or three A-levels or equivalent qualifications at level 3. <sup>[2]</sup>



## Length of training

Training through a full-time university course usually takes **three years**. However, if you already have a degree in a relevant subject, you can often get recognition for this, enabling you to do the course in **two years**. A nursing degree apprenticeship usually takes **4 years**. <sup>[4]</sup>



# 94%

94% of nursing students get a job within six months of finishing their course <sup>[5]</sup>



Standard working week in the NHS is

# 37.5 hours

<sup>[1]</sup>

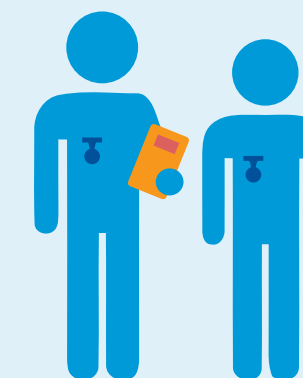
## 'What they say'

"On Sundays, my friends dread going to work the next day. I can't wait!" <sup>[6]</sup>

Christopher Dzikiti,  
(*Modern matron*)



There are currently **113** pre-registration courses available in mental health. <sup>[7]</sup>



## Skills and qualities needed

Your personality, communication skills and good knowledge of mental ill health theory are essential. You'll be warm and engaging while showing real empathy with service users and their individual circumstances. <sup>[8]</sup>

Facts and figures taken from: [1] [www.healthcareers.nhs.uk/AfC](http://www.healthcareers.nhs.uk/AfC) [2] <https://files.digital.nhs.uk/56/C50BAD/NHS%20Workforce%20Statistics%2C%20February%202019%20Staff%20Group%2C%20Care%20Setting%20and%20Level.xlsx> [3] [www.jobs.nhs.uk](http://www.jobs.nhs.uk) (30/05/19) [4] [www.healthcareers.nhs.uk/explore-roles/nursing/studying-nursing](http://www.healthcareers.nhs.uk/explore-roles/nursing/studying-nursing) [5] [www.healthcareers.nhs.uk/EXPLORE-ROLES/nursing/studying-nursing](http://www.healthcareers.nhs.uk/EXPLORE-ROLES/nursing/studying-nursing) [6] [www.healthcareers.nhs.uk/explore-roles/nursing/mental-health-nurse/real-life-story-christopher-dzikiti](http://www.healthcareers.nhs.uk/explore-roles/nursing/mental-health-nurse/real-life-story-christopher-dzikiti) [7] [www.healthcareers.nhs.uk/course](http://www.healthcareers.nhs.uk/course) [8] [www.healthcareers.nhs.uk/explore-roles/nursing/mental-health-nurse/personal-characteristics-and-skills-required-mental-health](http://www.healthcareers.nhs.uk/explore-roles/nursing/mental-health-nurse/personal-characteristics-and-skills-required-mental-health)