

MENTAL HEALTH NURSING



Starting salary for a newly qualified mental health nurse in the NHS is Agenda for Change band 5 **£21,909** outside London ^[1]



Entry requirements
Typically you will need a minimum of five GCSEs at grade C or above (usually in English and science) plus at least two and ideally three A-levels or equivalent qualifications at level 3 ^[2]



Around **41%** of all mental health nurses in the NHS work in community psychiatric services ^[3]

40,300

Around 40,300 mental health nurses work for the NHS ^[4]



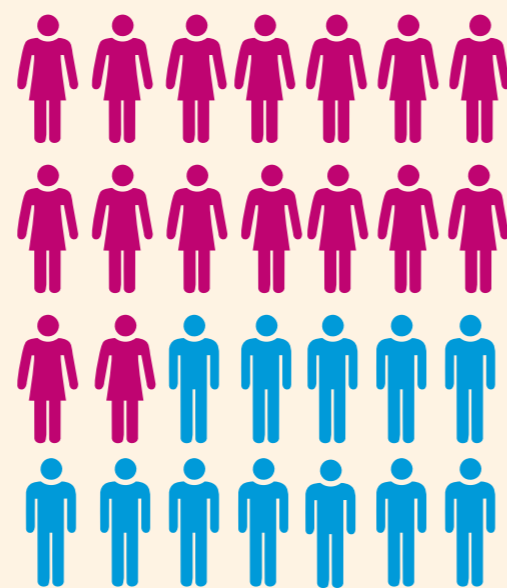
Current mental health nursing vacancies in the NHS ^[5]



Length of training
Training usually takes **three years**. However, if you already have a degree in a relevant subject, you can often get recognition for this, enabling you to do the course in **two years** ^[4]



Standard working week in the NHS is **37.5 hours** ^[1]



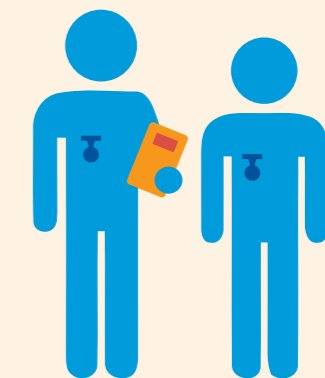
Approximately **29%** of mental health nurses working in the NHS are male and **71%** are female ^[4]

'What they say'

"On Sundays, my friends dread going to work the next day. I can't wait!" Christopher Dzikiti, Modern matron ^[6]



There are currently **98** pre-registration courses available in mental health ^[7]



Skills and qualities needed
Your personality, communication skills and good knowledge of mental ill health theory are essential. You'll be warm and engaging while showing real empathy with service users and their individual circumstances ^[8]

Facts and figures taken from; [1] www.healthcareers.nhs.uk/AfC [2] www.healthcareers.nhs.uk/explore-roles/nursing/mental-health-nurse/entry-requirements-mental-health-nursing [3] <http://www.hscic.gov.uk/catalogue/PUB16933/nhs-staf-2014-non-med-detl-tab.xls> [4] www.healthcareers.nhs.uk/explore-roles/nursing/mental-health-nurse/training-and-development-mental-health-nursing [5] www.jobs.nhs.uk [6] www.healthcareers.nhs.uk/explore-roles/nursing/mental-health-nurse/real-life-story-christopher-dzikiti [7] www.healthcareers.nhs.uk/i-am/looking-course [8] www.healthcareers.nhs.uk/explore-roles/nursing/mental-health-nurse/personal-characteristics-and-skills-required-mental-health