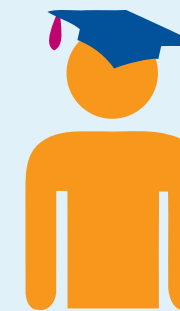


# MENTAL HEALTH NURSING



Starting salary for a newly qualified mental health nurse in the NHS is Agenda for Change band 5 **£22,128** outside London <sup>[1]</sup>



**Entry requirements**  
Typically you will need a minimum of five GCSEs at grade C (or equivalent) or above - usually in English and science - plus at least two and ideally three A-levels or equivalent qualifications at level 3. <sup>[2]</sup>



Around **47%** of all mental health nurses in the NHS work in community psychiatric services <sup>[3]</sup>

# 35,320

Around 35,320 mental health nurses work for the NHS <sup>[4]</sup>



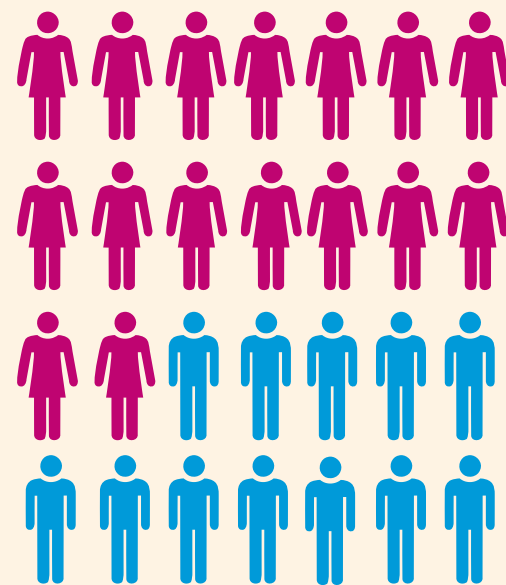
Current mental health nursing vacancies in the NHS <sup>[5]</sup>



**Length of training**  
Training usually takes **three years**. However, if you already have a degree in a relevant subject, you can often get recognition for this, enabling you to do the course in **two years** <sup>[4]</sup>



Standard working week in the NHS is **37.5 hours** <sup>[1]</sup>



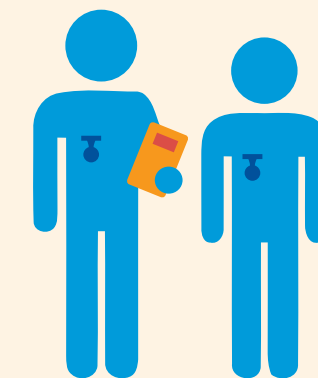
Approximately **29%** of mental health nurses working in the NHS are male and **71%** are female <sup>[3]</sup>

**'What they say'**

"On Sundays, my friends dread going to work the next day. I can't wait!"  
Christopher Dziki, Modern matron <sup>[6]</sup>



There are currently **103** pre-registration courses available in mental health <sup>[7]</sup>



**Skills and qualities needed**  
Your personality, communication skills and good knowledge of mental ill health theory are essential. You'll be warm and engaging while showing real empathy with service users and their individual circumstances <sup>[8]</sup>

Facts and figures taken from; [1] [www.healthcareers.nhs.uk/AfC](http://www.healthcareers.nhs.uk/AfC) [2] [www.healthcareers.nhs.uk/explore-roles/nursing/mental-health-nurse/entry-requirements-mental-health-nursing](http://www.healthcareers.nhs.uk/explore-roles/nursing/mental-health-nurse/entry-requirements-mental-health-nursing) [3] <https://digital.nhs.uk/catalogue/PUB30075> [4] <https://digital.nhs.uk/catalogue/PUB30075> [5] [www.jobs.nhs.uk](http://www.jobs.nhs.uk) [6] [www.healthcareers.nhs.uk/explore-roles/nursing/mental-health-nurse/real-life-story-christopher-dziki](http://www.healthcareers.nhs.uk/explore-roles/nursing/mental-health-nurse/real-life-story-christopher-dziki) [7] [www.healthcareers.nhs.uk/i-am/looking-course](http://www.healthcareers.nhs.uk/i-am/looking-course) [8] [www.healthcareers.nhs.uk/explore-roles/nursing/mental-health-nurse/personal-characteristics-and-skills-required-mental-health](http://www.healthcareers.nhs.uk/explore-roles/nursing/mental-health-nurse/personal-characteristics-and-skills-required-mental-health)