

# PHYSICIAN ASSOCIATE



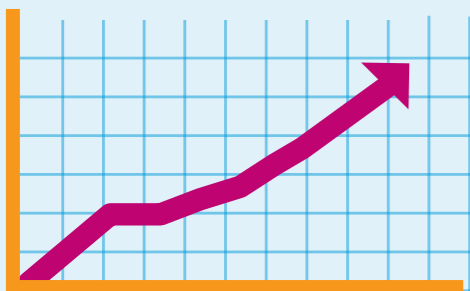
STARTING PAY  
**£31,072**  
AFTER TRAINING

Starting salary for physician associates in the NHS is usually Agenda for Change band 7 **£31,072** outside London <sup>[1]</sup>

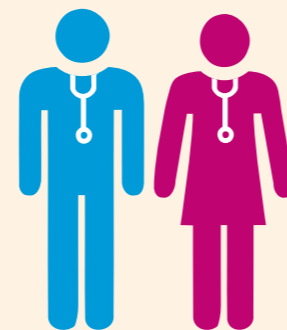


## Skills and qualities needed

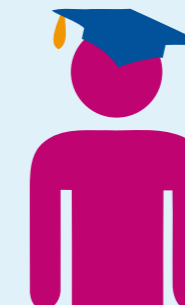
Academic achievement, experience of working with the public, an interest in health or social care, the right values to work for the NHS and good communication skills <sup>[2]</sup>



Health Education England is commissioning **657** training places for physician associates in 2016/17 <sup>[4]</sup>



Physician associates work under the supervision of a doctor to provide support in the diagnosis and management of patients <sup>[5]</sup>



## Entry requirements

You'll usually need a bioscience-related first degree to get onto one of the training programmes available <sup>[2]</sup>



Standard working week is **37.5 hours** <sup>[6]</sup>



More than **25 universities** deliver physician associate training <sup>[3]</sup>

## 'What they say'

"The training I've received means I now have a varied role. Every day of the week I do something different!" <sup>[7]</sup>

Kate Bascombe  
(Physician associate)



Training lasts for **2 years** and focuses on general adult medicine in hospitals and general practice <sup>[3]</sup>



Training includes **1,600 hours** of clinical training, and **90 hours** spent in mental health, surgery, obstetrics and gynaecology, and paediatrics <sup>[3]</sup>

Facts and figures taken from [1] [www.healthcareers.nhs.uk/AfC](http://www.healthcareers.nhs.uk/AfC) [2] [www.healthcareers.nhs.uk/explore-roles/physician-associateassistant/physician-associate/entry-requirements-skills-and](http://www.healthcareers.nhs.uk/explore-roles/physician-associateassistant/physician-associate/entry-requirements-skills-and) [3] [www.healthcareers.nhs.uk/explore-roles/physician-associateassistant/physician-associate/training-development-and-regulation](http://www.healthcareers.nhs.uk/explore-roles/physician-associateassistant/physician-associate/training-development-and-regulation) [4] <https://hee.nhs.uk/our-work/planning-commissioning/work-force-planning/commissioning-investment-plan-england-2016-17> [5] [www.healthcareers.nhs.uk/explore-roles/physician-associateassistant/physician-associate](http://www.healthcareers.nhs.uk/explore-roles/physician-associateassistant/physician-associate) [6] [www.healthcareers.nhs.uk/about/careers-nhs/nhs-pay-and-benefits](http://www.healthcareers.nhs.uk/about/careers-nhs/nhs-pay-and-benefits) [7] [www.healthcareers.nhs.uk/explore-roles/physician-associateassistant/physician-associate/real-life-story-kate-bascombe](http://www.healthcareers.nhs.uk/explore-roles/physician-associateassistant/physician-associate/real-life-story-kate-bascombe)