

# PHYSICIAN ASSOCIATE



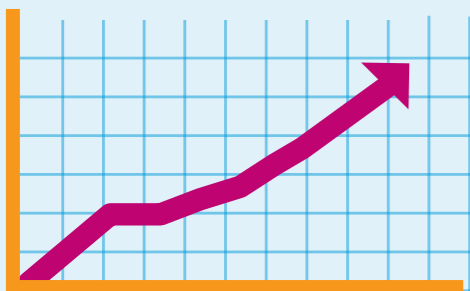
STARTING PAY  
**£33,222**  
AFTER TRAINING

Starting salary for physician associates in the NHS is usually Agenda for Change band 7 **£33,222** outside London. <sup>[1]</sup>

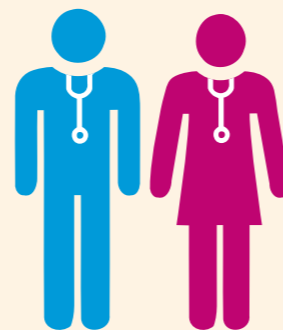


## Skills and qualities needed

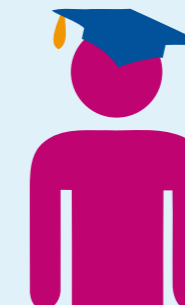
Academic achievement, experience of working with the public, an interest in health or social care, the right values to work for the NHS and excellent communication skills. <sup>[2]</sup>



The current training pipeline will deliver **3,200** physician associates by 2020. <sup>[4]</sup>



Physician associates work under the supervision of a doctor and are trained to perform a number of tasks including taking medical histories from patients, performing examinations and diagnosing illnesses. <sup>[5]</sup>



## Entry requirements

You'll usually need a bioscience-related first degree to get onto one of the training programmes available. <sup>[2]</sup>



Standard working week is

**37.5 hours** <sup>[6]</sup>



More than **30 UK universities** deliver physician associate training. <sup>[8]</sup>

## 'What they say'

"The best part is building a professional relationship with a number of my patients." <sup>[7]</sup>

Andy King  
(Physician associate in primary care)



Training lasts for **2 years** and focuses on general adult medicine in hospitals and general practice. <sup>[3]</sup>



Training for the 2 year postgraduate route includes **1,600 hours** of clinical placements in a variety of settings, including community medicine, mental health and emergency medicine. <sup>[3]</sup>

Facts and figures taken from [1] [www.healthcareers.nhs.uk/AFC](http://www.healthcareers.nhs.uk/AFC) [2] [www.healthcareers.nhs.uk/explore-roles/physician-associateassistant/physician-associate/entry-requirements-skills-and](http://www.healthcareers.nhs.uk/explore-roles/physician-associateassistant/physician-associate/entry-requirements-skills-and) [3] [www.healthcareers.nhs.uk/explore-roles/physician-associateassistant/physician-associate/training-development-and-regulation](http://www.healthcareers.nhs.uk/explore-roles/physician-associateassistant/physician-associate/training-development-and-regulation) [4] [www.hee.nhs.uk/our-work/workforce-strategy-england/workforce-strategy](http://www.hee.nhs.uk/our-work/workforce-strategy-england/workforce-strategy) [5] [www.healthcareers.nhs.uk/explore-roles/physician-associateassistant/physician-associate](http://www.healthcareers.nhs.uk/explore-roles/physician-associateassistant/physician-associate) [6] [www.healthcareers.nhs.uk/about/careers-nhs/nhs-pay-and-benefits](http://www.healthcareers.nhs.uk/about/careers-nhs/nhs-pay-and-benefits) [7] [www.healthcareers.nhs.uk/explore-roles/medical-associate-professions/roles-medical-associate-professions/physician-associate/real-life-story-andy-king](http://www.healthcareers.nhs.uk/explore-roles/medical-associate-professions/roles-medical-associate-professions/physician-associate/real-life-story-andy-king) [8] [www.healthcareers.nhs.uk/courses](http://www.healthcareers.nhs.uk/courses)