

# A CAREER IN PSYCHIATRY



Doctors in specialty training earn a basic starting salary of **£36,461**. Once working as a specialty doctor, they will typically earn between **£37,923** and **£70,718** <sup>[1]</sup>

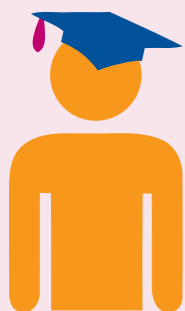


There are **six** specialties within psychiatry <sup>[4]</sup>



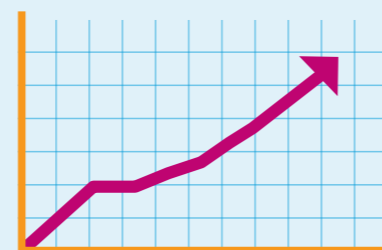
## Training

Following a minimum of five years at university and two years training afterwards, you will typically train for six years to become a psychiatrist <sup>[3]</sup>



## Entry requirements

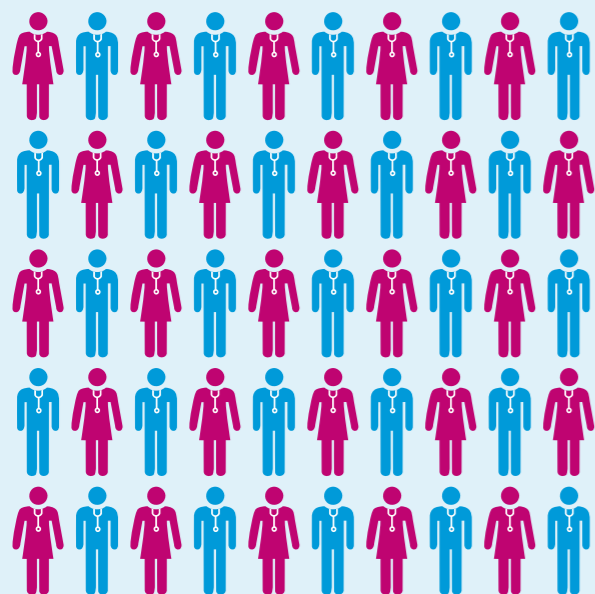
For 5-year medical school courses, you will need very high A-level grades including sciences. There are other routes in if you have non-science subjects or a degree, but for all you must demonstrate an interest in medicine. You'll also need to pass an interview and usually take an admissions test. <sup>[2]</sup>



Old age psychiatry has shown the largest growth of all the psychiatry specialties <sup>[5]</sup>



Psychiatry is the **fifth** largest medical specialty in the UK <sup>[5]</sup>

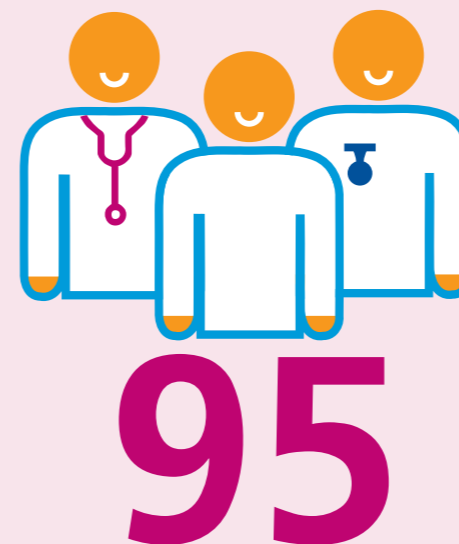


In 2016/17, Health Education England planned to train **1,463** doctors in core psychiatry over a three year programme <sup>[6]</sup>



## Skills and qualities needed

Psychiatrists need to show empathy and compassion, the ability to treat others with understanding and respect, excellent listening skills, emotional resilience, patience and a sense of humour <sup>[7]</sup>



There are currently 95 consultant psychiatry vacancies in the NHS <sup>[8]</sup>

**'What they say'**

"We don't focus solely on disease – psychiatry is a holistic specialty, which also makes it enjoyable."  
Dr Brad Hillier, Locum consultant forensic psychiatrist <sup>[9]</sup>

Facts and figures taken from; [1] [www.healthcareers.nhs.uk/about/careers-medicine/pay-doctors](http://www.healthcareers.nhs.uk/about/careers-medicine/pay-doctors) [2] [www.healthcareers.nhs.uk/i-am/considering-or-university/studying-medicine/applying-medical-school/medical-school-courses](http://www.healthcareers.nhs.uk/i-am/considering-or-university/studying-medicine/applying-medical-school/medical-school-courses) [3] [www.healthcareers.nhs.uk/explore-roles/psychiatry/general-adult-psychiatry/training-and-development](http://www.healthcareers.nhs.uk/explore-roles/psychiatry/general-adult-psychiatry/training-and-development) [4] <https://www.healthcareers.nhs.uk/Explore-roles/psychiatry> [5] [www.healthcareers.nhs.uk/explore-roles/psychiatry/old-age-psychiatry](http://www.healthcareers.nhs.uk/explore-roles/psychiatry/old-age-psychiatry) [6] [www.hee.nhs.uk/sites/default/files/documents/HEE%20commissioning%20and%20investment%20plan.pdf](http://www.hee.nhs.uk/sites/default/files/documents/HEE%20commissioning%20and%20investment%20plan.pdf) [7] <https://www.healthcareers.nhs.uk/explore-roles/psychiatry/old-age-psychiatry/entry-requirements-skills-and-interests> [9] [www.healthcareers.nhs.uk/BradHillier](http://www.healthcareers.nhs.uk/BradHillier)