

# SCHOOL NURSING



Starting salary for school nurses in the NHS is Agenda for Change band 6 **£30,401** outside London. <sup>[1]</sup>



## Entry requirements

School nurses are qualified and registered nurses or midwives with additional qualifications. To become a registered nurse, you'll need to study for a degree level qualification in nursing through either a full-time course or a nursing degree apprenticeship. You'll typically need a minimum of five GCSEs at grade 4-9/C or above plus two or three A-levels or equivalent qualifications at level 3. <sup>[2]</sup>



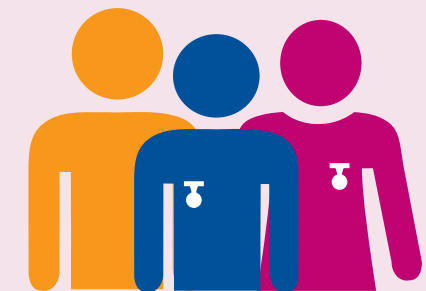
**94%**

94% of nursing students get a job within six months of finishing their course. <sup>[2]</sup>



## Training

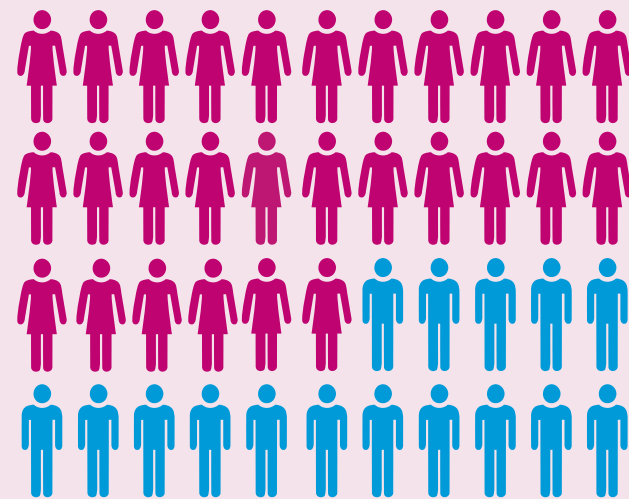
Once qualified as a registered nurse, you can choose to take an approved programme in Specialist Community Public Health Nursing. <sup>[3]</sup>



There are **46** vacancies for school nurses. <sup>[4]</sup>



Standard working week in the NHS is **37.5 hours** <sup>[1]</sup>



There are **2,207** qualified school nurses in the NHS. <sup>[5]</sup>

**'What they say'**

"Young people get a lot of negative press but they never fail to impress and inspire me with their resilience and creativity." <sup>[6]</sup>

Philip Wells,  
*(lead professional school nursing/ practice teacher)*



## Skills and qualities needed

As a school nurse you'll need to be well organised, confident and able to cope with potentially challenging situations. <sup>[7]</sup>

Facts and figures taken from: [1] [www.healthcareers.nhs.uk/Afc](http://www.healthcareers.nhs.uk/Afc) [2] [www.healthcareers.nhs.uk/explore-roles/nursing/studying-nursing](http://www.healthcareers.nhs.uk/explore-roles/nursing/studying-nursing) [3] [www.healthcareers.nhs.uk/explore-roles/public-health/school-nurse/entry-requirements-school-nurse](http://www.healthcareers.nhs.uk/explore-roles/public-health/school-nurse/entry-requirements-school-nurse) [4] [www.jobs.nhs.uk](http://www.jobs.nhs.uk) (30/05/19) [5] <https://files.digital.nhs.uk/56/C50BAD/NHS%20Workforce%20Statistics%2C%20February%202019%20Staff%20Group%2C%20Care%20Setting%20and%20Level.xlsx> [6] [www.healthcareers.nhs.uk/explore-roles/school-nurse/real-life-story-phillip-wells](http://www.healthcareers.nhs.uk/explore-roles/school-nurse/real-life-story-phillip-wells) [7] [www.healthcareers.nhs.uk/explore-roles/public-health/school-nurse/skills-andinterests-school-nurse](http://www.healthcareers.nhs.uk/explore-roles/public-health/school-nurse/skills-andinterests-school-nurse)