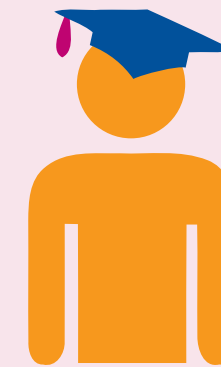


# SCHOOL NURSING



Starting salary for school nurses in the NHS is Agenda for Change band 6 **£26,565** outside London <sup>[1]</sup>



## Entry requirements

To become a registered nurse, you'll need to study for a nursing degree. You'll typically need a minimum of five GCSEs at grade C or above (usually in English and science) plus two or three A-levels or equivalent qualifications at level 3 <sup>[2]</sup>

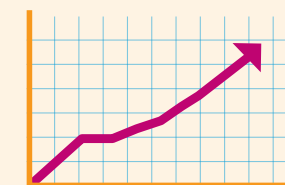


Current school nursing vacancies in the NHS <sup>[4]</sup>



## Training

Once qualified as a registered nurse, you can choose to take an approved programme in Specialist Community Public Health Nursing <sup>[3]</sup>



**285**

Health Education England planned to commission 285 school nurse training places in 2016/17 <sup>[5]</sup>



Standard working week in the NHS is

**37.5 hours** <sup>[1]</sup>



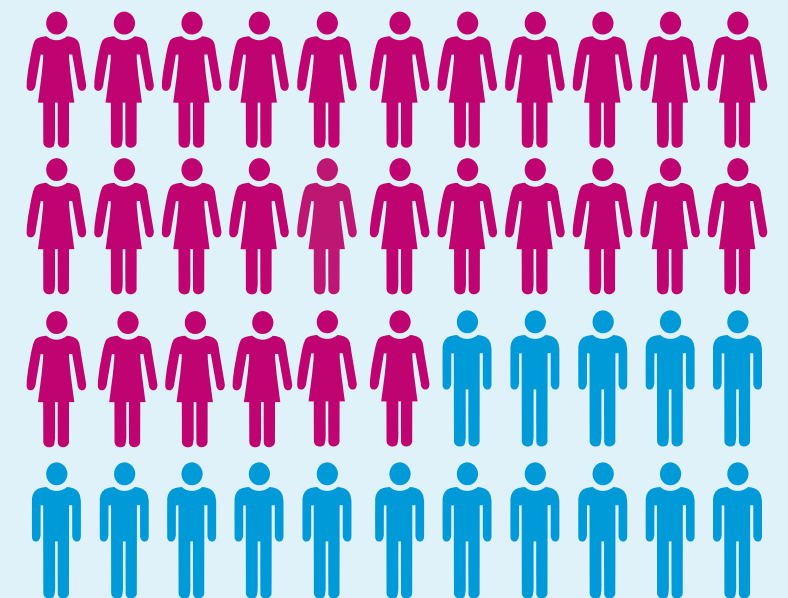
## Skills and qualities needed

As a school nurse you'll need to be well organised, confident and able to cope with potentially challenging situations <sup>[6]</sup>



## What they say

"Young people get a lot of negative press but they never fail to impress and inspire me with their resilience and creativity. Philip Wells, lead professional school nursing/practice teacher <sup>[7]</sup>



There are **2,505** qualified school nurses in the NHS <sup>[8]</sup>

Facts and figures taken from; [1] [www.healthcareers.nhs.uk/AfC](http://www.healthcareers.nhs.uk/AfC) [2] [www.healthcareers.nhs.uk/i-am/considering-or-university/studying-nursing](http://www.healthcareers.nhs.uk/i-am/considering-or-university/studying-nursing) [3] [www.healthcareers.nhs.uk/explore-roles/public-health/school-nurse/entry-requirements-school-nurse](http://www.healthcareers.nhs.uk/explore-roles/public-health/school-nurse/entry-requirements-school-nurse) [4] [www.jobs.nhs.uk](http://www.jobs.nhs.uk) (02/02/2016) [5] <https://hee.nhs.uk/sites/default/files/documents/HEE%20commissioning%20and%20investment%20plan.pdf> [6] [www.healthcareers.nhs.uk/explore-roles/public-health/school-nurse/skills-and-interests-school-nurse](http://www.healthcareers.nhs.uk/explore-roles/public-health/school-nurse/skills-and-interests-school-nurse) [7] [www.healthcareers.nhs.uk/explore-roles/school-nurse/real-life-story-philip-wells](http://www.healthcareers.nhs.uk/explore-roles/school-nurse/real-life-story-philip-wells) [8] <http://www.content.digital.nhs.uk/catalogue/PUB24214/nhs-work-stat-mar-2017-area-level.xlsx>